

Model Name:

Elite POM PDU

Elite POM PDU provides remote manual control of the critical devices by clicking on a few buttons on the smart phone or computer webpage. Stop the problem device by cutting off the power to a specific outlet. By cycling the power off and restarting the device remotely, you save time and money by eliminating the need to send technicians to the root cause of the problem.

Managers can monitor the power usage information of each output port from the remote end through the Internet to fully understand the power consumption of all the devices. Set up overload event alerts and notify managers via Email and TRAP, allowing managers to respond to crises in the shortest possible time to minimize disasters.

The PDU has two environmental sensor ports that track climate information: temperature and humidity environment variables. The data is available from any web browser and is SNMP-compliant for easy tracking of critical data without the use of any external software.

Provide central management software, which can manage a large number of PDUs' power, temperature and humidity information. The database stores the power consumption information of the power strip and provides the history curve chart for the manager's reference.

Features:

System Function:

- Built-in embedded system:
Support 10/100M Ethernet interface, provides webpage and SNMP remote management.
- Local display information:
Seven-segments can display current, web site and temperature and humidity values.
- Multiple protocols:
Support ICMP, ARP, IP, TCP, UDP, DHCP, HTTP, HTTPS, FTP, NTP, SNMP v1/2/3, TLS1.2, IPv4 and IPv6, Telnet, SSHv2
- Management Account Certification:
Radius certification support.
- Multi-account management:
Multi-group account management system. And provide three-tier permission management.
- IP filtering:
Support IP filtering, improve network security mechanisms.
- Power record:
Store up to 5000 power and event data.
- Remote firmware upgrade:
Provides remote firmware upgrade mechanism.
- System operation message:
Send the normal operation of the message automatically by trap.
- Hardware key definition:
User-definable button function.
- Temperature unit conversion:
Temperature units can choose Celsius or Fahrenheit
- System configuration restore:
Support the output of the system settings, to easily deploy a large amount of the same model of PDU.
- Multilingual Support:
Support Chinese, English, French, German, Spanish, Russian, Czech, Arabian, Persian.

Power Management:



Remote Monitor

Remote monitoring PDU status by web and SNMP



Remote Control

Remote per outlet on/off by web and SNMP.



Current Measurement

Measure PDU total current consumption.



Mail Notification

Notify specified user by mail and SNMP when outlet action or current over threshold.



Threshold Sensing

User-definable warning and overload threshold value as the basis for alarm.



Event Alert

When current exceeds the preset threshold, PDU will beep and LED will flash.



Power Sequence

User-definable power on/off sequence time.



Schedule Control

Timed & scheduled on/off/reboot control.



Ping Event Control

When the specified IT device does not respond to PING, the output will perform a preset power action.



Overload Protection

When overload, circuit breaker will automatically trip to protect the safety of electricity.



Group Control

Set multiple outlets as a single group while controlling the power output.



Outlet-Level Monitor

Remote per outlet current monitoring.



Event Reaction

Outlet action via pre-set event, including power, environment event and receiving trap from other device.



kWh Measurement

Voltage, frequency, power factor, active power, apparent power and kWh measurement.



Environment Detection

Optional accessory probe to detect temperature and humidity.



Central Management

Free centralized monitoring software, real-time monitoring of a large number of PDU, provide data records and history chart.

Model List

Model Number	Output	Input	Voltage	Capacity
WHD-1623K-08N8	(8) C13	Inlet IEC320 C20 Power cord, C19 to C20, 3m	230V	16 Amp
WHD-3223C-08N8	(8) C13	IEC309, power cord, 3m	230V	32 Amp
WHC-3223C-16NB	(14) C13 (2) C19	IEC309, power cord, 3m	230V	32 Amp
WHC-3223C-24ND	(21) C13 (3) C19	IEC309, power cord, 3m	230V	32 Amp
WHC-1640C-24ND	(21) C13 (3) C19	IEC309, power cord, 3m	400V AC, 3-Phase 3P+N+G / 230V	16 Amp / phase
WHC-3240C-24ND	(18) C13 (6) C19	IEC309, power cord, 3m	400V AC, 3-Phase 3P+N+G / 230V	32 Amp / phase
WHD-1511A-08N8	(8) 5-15/20R	Inlet IEC320 C20 Power cord, C19 to 5-15P, 3m	115V	15 Amp
WHC-2011A-16NB	(16) 5-15/20R	5-20P, power cord, 3m	115V	20 Amp
WHD-3011M-08N8	(8) 5-15/20R	L5-30P, power cord, 3m	115V	30 Amp
WHC-3011M-16NB	(16) 5-15/20R	L5-30P, power cord, 3m	115V	30 Amp
WHC-3011M-24ND	(24) 5-15/20R	L5-30P, power cord, 3m	115V	30 Amp
WHD-3020P-08N8	(8) C13	L6-30P, power cord, 3m	208V	30 Amp
WHC-3020P-16NB	(14) C13 (2) C19	L6-30P, power cord, 3m	208V	30 Amp
WHC-3020P-24ND	(21) C13 (3) C19	L6-30P, power cord, 3m	208V	30 Amp

Model Number:

WHD-1623K-08N8

Front view



Back view



Plug



Specification

Output		Input	
Voltage	200-240 VAC	Voltage	200-240 VAC
Max. Current	16 A	Frequency	50/60Hz, full range
Outlet	(8) IEC320 C13	Max. Capacity	3840 VA
ON/OFF Ind.	(8) Green LED	Connection	IEC320 C20
Threshold Ind.	(8) Red LED	Status Ind.	(1) Red LED
Info. Display	4 digits of 7 Segments	Overload PROT	Circuit breaker (UL1077)
Measurement		Other	
Current	+/- 1%+/-0.1A @0.2A ~ 32 A	ENET Connection	(1) RJ45
Voltage	+/- 1% +/- 1V @80V~250V	ENV Connection	(2) RJ11
Active Power	+/- 1% +/- 5W @50W~8000W	Function Selection	(1) Button
Apparent Power	+/- 1% @50VA~8000VA	DHCP Ind.	(1) Green LED
Frequency	+/- 1% @50~65Hz	SSL Ind.	(1) Green LED
Power Factor	+/- 1% @0.1~1.0		
kWh	.001kWh~99999.999kWh, (+/- 1% @50W~8000W) kh=1.0		
Dimension/Weight		Operation	
Net Size	432 x 216 x 44.5 mm	Operation Temp.	0 ~ 55°C
Net Weight	3.5 kg	Operation Humid.	0% ~ 90% RH
Package Size	490 x 330 x 155 mm	Storage Temp.	-20°C ~ 65°C
Package Weight	4.1 kg	Storage Humid.	0% ~ 90% RH
Approval			
Certification	CE, FCC		
Warranty	2 years		

Package

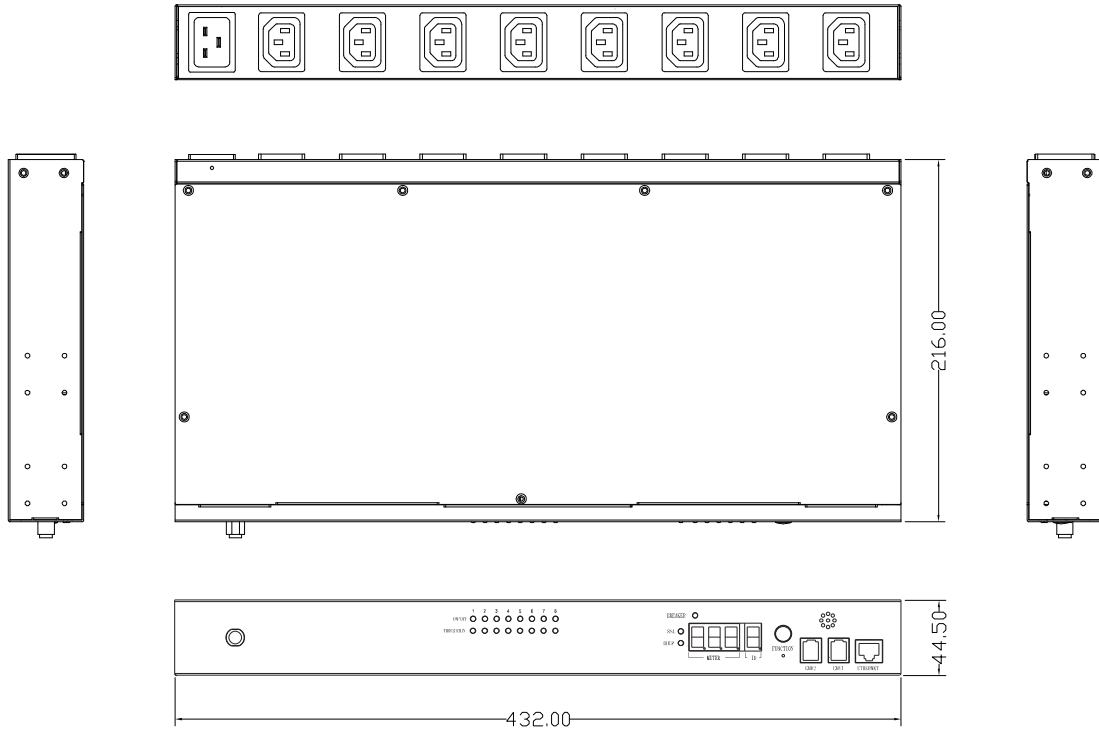
No	Description
1	PDU 1 set
2	Rack mount accessories 1 set
3	Software CD (manual, MIB)
4	Power cord, C19 to C20, 3 m

Accessory

Model Number	Model Name
CPM-ENV-2	Temp./Humidity probe (ENV)
STR-C14-B	C13 socket protection



Line Drawing



Model Number:

WHD-3223C-08N8

Plug



Specification

Output		Input	
Voltage	200-240 VAC	Voltage	200-240 VAC
Max. Current	32 A	Frequency	50/60Hz, full range
Outlet	(8) IEC320 C13	Max. Capacity	7680 VA
ON/OFF Ind.	(8) Green LED	Connection	IEC309, power cord, 3m
Threshold Ind.	(8) Red LED	Status Ind.	(2) Red LED
Info. Display	4 digits of 7 Segments	Overload PROT	(2) Circuit breaker (UL1077)
Measurement		Other	
Current	+/- 1%+/-0.1A @0.2A ~ 32 A	ENET Connection	(1) RJ45
Voltage	+/- 1% +/- 1V @80V~250V	ENV Connection	(2) RJ11
Active Power	+/- 1% +/- 5W @50W~8000W	Function Selection	(1) Button
Apparent Power	+/- 1% @50VA~8000VA	DHCP Ind.	(1) Green LED
Frequency	+/- 1% @50~65Hz	SSL Ind.	(1) Green LED
Power Factor	+/- 1% @0.1~1.0		
kWh	.001kWh~99999.999kWh, (+/- 1% @50W~8000W) kh=1.0		
Dimension/Weight		Operation	
Net Size	432 x 216 x 44.5 mm	Operation Temp.	0 ~ 55°C
Net Weight	4.4 kg	Operation Humid.	0% ~ 90% RH
Package Size	490 x 390 x 155 mm	Storage Temp.	-20°C ~ 65°C
Package Weight	5.0 kg	Storage Humid.	0% ~ 90% RH
Approval			
Certification	CE, FCC		
Warranty	2 years		

Package

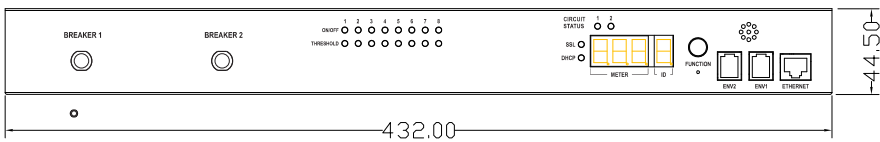
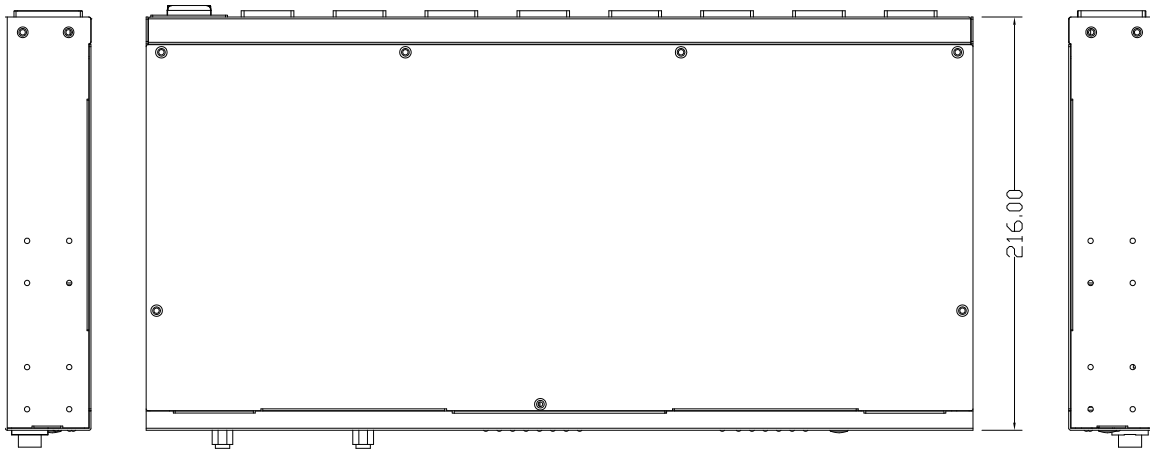
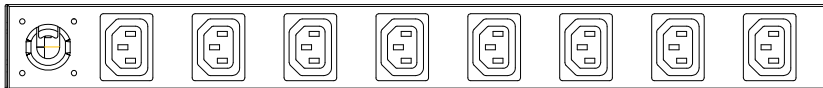
No.	Description
1	PDU 1 set
2	Rack mount accessories 1 set
3	Software CD (manual, MIB)

Accessory

Model Number	Model Name
CPM-ENV-2	Temp./Humidity probe (ENV)
STR-C14-B	C13 socket protection



Line Drawing



Model Number:**WHC-3223C-16NB**

Plug

**Specification**

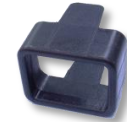
Output		Input	
Voltage	200-240 VAC	Voltage	200-240 VAC
Max. Current	32 A	Frequency	50/60Hz, full range
Outlet	(14) IEC320 C13 (2) IEC320 C19	Max. Capacity	7680 VA
ON/OFF Ind.	(16) Green LED	Connection	IEC309, power cord, 3m
Threshold Ind.	(16) Red LED	Status Ind.	(2) Red LED
Info. Display	4 digits of 7 Segments	Overload PROT	(2) Circuit breaker (UL1077)
Measurement		Other	
Current	+/- 1% +/- 0.1A @0.2A ~ 32 A	ENET Connection	(1) RJ45
Voltage	+/- 1% +/- 1V @80V~250V	ENV Connection	(2) RJ11
Active Power	+/- 1% +/- 5W @50W~8000W	Function Selection	(1) Button
Apparent Power	+/- 1% @50VA~8000VA	DHCP Ind.	(1) Green LED
Frequency	+/- 1% @50~65Hz	SSL Ind.	(1) Green LED
Power Factor	+/- 1% @0.1~1.0		
kWh	.001kWh~99999.999kWh, (+/- 1% @50W~8000W) kh=1.0		
Dimension/Weight		Operation	
Net Size	1245 x 56 x 80 mm	Operation Temp.	0 ~ 55°C
Net Weight	5.8 kg	Operation Humid.	0% ~ 90% RH
Package Size	1360 x 220 x 110 mm	Storage Temp.	-20°C ~ 65°C
Package Weight	6.6 kg	Storage Humid.	0% ~ 90% RH
Approval			
Certification	CE, FCC		
Warranty	2 years		

Package

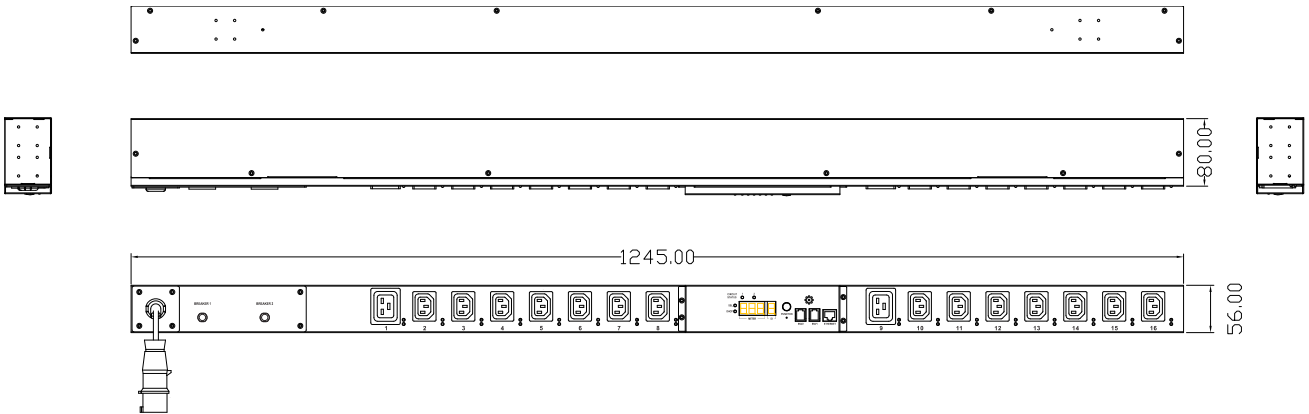
No.	Description
1	PDU 1 set
2	Rack mount accessories 1 set
3	Software CD (manual, MIB)

Accessory

Model Number	Model Name
CPM-ENV-2	Temp./Humidity probe (ENV)
STR-C14-B	C13 socket protection
STR-C20-B	C19 socket protection



Line Drawing



Model Number:

WHC-3223C-24ND

Plug



Specification

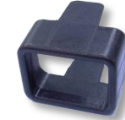
Output		Input	
Voltage	200-240 VAC	Voltage	200-240 VAC
Max. Current	32 A	Frequency	50/60Hz, full range
Outlet	(21) IEC320 C13 (3) IEC320 C19	Max. Capacity	7680 VA
ON/OFF Ind.	(24) Green LED	Connection	IEC309, power cord, 3m
Threshold Ind.	(24) Red LED	Status Ind.	(3) Red LED
Info. Display	4 digits of 7 Segments	Overload PROT	(3) Circuit breaker (UL1077)
Measurement		Other	
Current	+/- 1% +/- 0.1A @0.2A ~ 32 A	ENET Connection	(1) RJ45
Voltage	+/- 1% +/- 1V @80V~250V	ENV Connection	(2) RJ11
Active Power	+/- 1% +/- 5W @50W~8000W	Function Selection	(1) Button
Apparent Power	+/- 1% @50VA~8000VA	DHCP Ind.	(1) Green LED
Frequency	+/- 1% @50~65Hz	SSL Ind.	(1) Green LED
Power Factor	+/- 1% @0.1~1.0		
kWh	.001kWh~99999.999kWh, (+/- 1% @50W~8000W) kh=1.0		
Dimension/Weight		Operation	
Net Size	1778 x 56 x 80 mm	Operation Temp.	0 ~ 55°C
Net Weight	7.8 kg	Operation Humid.	0% ~ 90% RH
Package Size	1890 x 220 x 110 mm	Storage Temp.	-20°C ~ 65°C
Package Weight	9.0 kg	Storage Humid.	0% ~ 90% RH
Approval			
Certification	CE, FCC		
Warranty	2 years		

Package

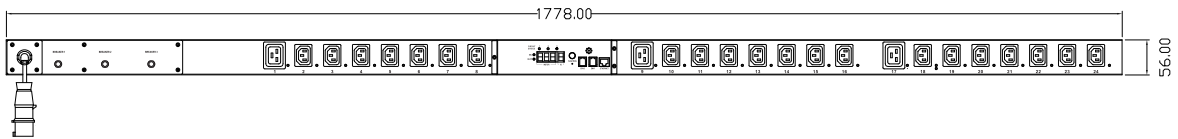
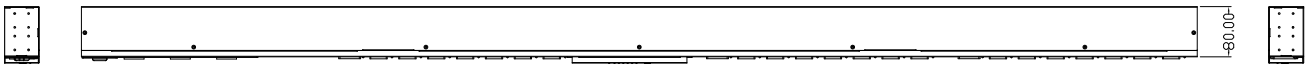
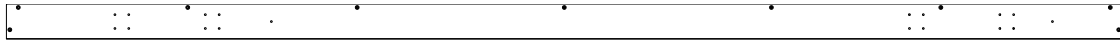
No.	Description
1	PDU 1 set
2	Rack mount accessories 1 set
3	Software CD (manual, MIB)

Accessory

Model Number	Model Name
CPM-ENV-2	Temp./Humidity probe (ENV)
STR-C14-B	C13 socket protection
STR-C20-B	C19 socket protection



Line Drawing



Model Number: WHC-1640C-24ND

Plug





Specification

Output		Input	
Voltage	200-240 VAC	Voltage	400 VAC, 3 Phase 3P+N+PE
Max. Current	16 A, Per phase	Frequency	50/60Hz, full range
Outlet	(21) IEC320 C13 (3) IEC320 C19	Max. Capacity	11 kVA
ON/OFF Ind.	(24) Green LED	Connection	IEC309, power cord, 3m
Threshold Ind.	(24) Red LED	Status Ind.	(3) Red LED
Info. Display	4 digits of 7 Segments	Overload PROT	(3) Circuit breaker (UL489)
Measurement		Other	
Current	+/- 1% +/-0.1A @0.2A ~ 32 A	ENET Connection	(1) RJ45
Voltage	+/- 1% +/- 1V @80V~250V	ENV Connection	(2) RJ11
Active Power	+/- 1% +/- 5W @50W~8000W	Function Selection	(1) Button
Apparent Power	+/- 1% @50VA~8000VA	DHCP Ind.	(1) Green LED
Frequency	+/- 1% @50~65Hz	SSL Ind.	(1) Green LED
Power Factor	+/- 1% @0.1~1.0		
kWh	.001kWh~99999.999kWh, (+/- 1% @50W~8000W) kh=1.0		
Dimension/Weight		Operation	
Net Size	1778 x 56 x 80 mm	Operation Temp.	0 ~ 55°C
Net Weight	7.8 kg	Operation Humid.	0% ~ 90% RH
Package Size	1890 x 220 x 110 mm	Storage Temp.	-20°C ~ 65°C
Package Weight	9.0 kg	Storage Humid.	0% ~ 90% RH
Approval			
Certification	CE, FCC		
Warranty	2 years		

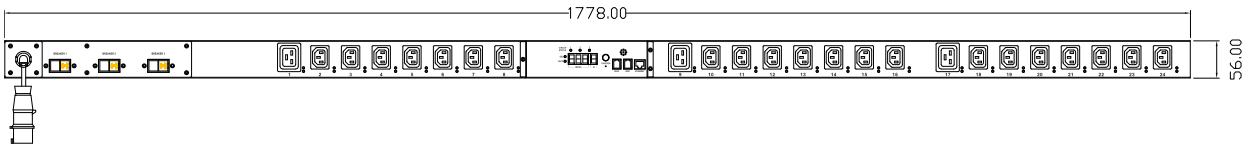
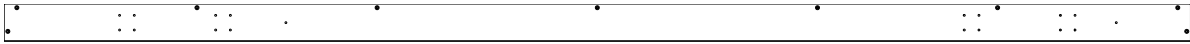
Package

No.	Description
1	PDU 1 set
2	Rack mount accessories 1 set
3	Software CD (manual, MIB)

Accessory

Model Number	Model Name
CPM-ENV-2	Temp./Humidity probe (ENV)
STR-C14-B	C13 socket protection
	
STR-C20-B	C19 socket protection
	

Line Drawing



Model Number: WHC-3240C-24ND



Specification

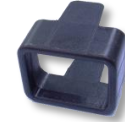
Output		Input	
Voltage	200-240 VAC	Voltage	400 VAC, 3 Phase 3P+N+PE
Max. Current	32 A	Frequency	50/60Hz, full range
Outlet	(18) IEC320 C13 (6) IEC320 C19	Max. Capacity	22 kVA
ON/OFF Ind.	(24) Green LED	Connection	IEC309, power cord, 3m
Threshold Ind.	(24) Red LED	Status Ind.	(6) Red LED
Info. Display	4 digits of 7 Segments	Overload PROT	(6) Circuit breaker (UL489)
Measurement		Other	
Current	+/- 1% +/- 0.1A @0.2A ~ 32 A	ENET Connection	(1) RJ45
Voltage	+/- 1% +/- 1V @80V~250V	ENV Connection	(2) RJ11
Active Power	+/- 1% +/- 5W @50W~8000W	Function Selection	(1) Button
Apparent Power	+/- 1% @50VA~8000VA	DHCP Ind.	(1) Green LED
Frequency	+/- 1% @50~65Hz	SSL Ind.	(1) Green LED
Power Factor	+/- 1% @0.1~1.0		
kWh	.001kWh~99999.999kWh, (+/- 1% @50W~8000W) kh=1.0		
Dimension/Weight		Operation	
Net Size	1778 x 56 x 80 mm	Operation Temp.	0 ~ 55°C
Net Weight	8.0 kg	Operation Humid.	0% ~ 90% RH
Package Size	1890 x 220 x 110 mm	Storage Temp.	-20°C ~ 65°C
Package Weight	9.2 kg	Storage Humid.	0% ~ 90% RH
Approval			
Certification	CE, FCC		
Warranty	2 years		

Package

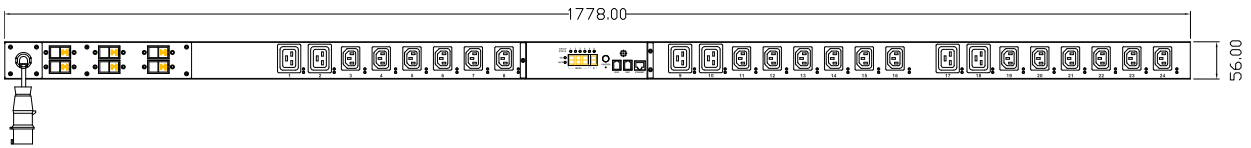
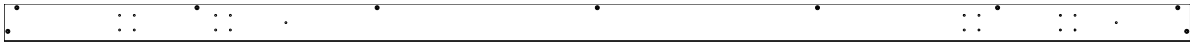
No.	Description
1	PDU 1 set
2	Rack mount accessories 1 set
3	Software CD (manual, MIB)

Accessory

Model Number	Model Name
CPM-ENV-2	Temp./Humidity probe (ENV)
STR-C14-B	C13 socket protection
STR-C20-B	C19 socket protection



Line Drawing



Model Number:

WHD-1511A-08N8

Front view



Back view



Plug



Specification

Output		Input	
Voltage	100-127 VAC	Voltage	100-127 VAC
Max. Current	15 A	Frequency	50/60Hz, full range
Outlet	(8) NEMA 5-15/20R	Max. Capacity	1905 VA
ON/OFF Ind.	(8) Green LED	Connection	IEC320 C20
Threshold Ind.	(8) Red LED	Status Ind.	(1) Red LED
Info. Display	4 digits of 7 Segments	Overload PROT	(1) Circuit breaker (UL1077)
Measurement		Other	
Current	+/- 1%+/-0.1A @0.2A ~ 32 A	ENET Connection	(1) RJ45
Voltage	+/- 1% +/- 1V @80V~250V	ENV Connection	(2) RJ11
Active Power	+/- 1% +/- 5W @50W~8000W	Function Selection	(1) Button
Apparent Power	+/- 1% @50VA~8000VA	DHCP Ind.	(1) Green LED
Frequency	+/- 1% @50~65Hz	SSL Ind.	(1) Green LED
Power Factor	+/- 1% @0.1~1.0		
kWh	.001kWh~99999.999kWh, (+/- 1% @50W~8000W) kh=1.0		
Dimension/Weight		Operation	
Net Size	432 x 216 x 44.5 mm	Operation Temp.	0 ~ 55°C
Net Weight	3.5 kg	Operation Humid.	0% ~ 90% RH
Package Size	490 x 330 x 155 mm	Storage Temp.	-20°C ~ 65°C
Package Weight	4.1 kg	Storage Humid.	0% ~ 90% RH
Approval			
Certification	CE, FCC		
Warranty	2 years		

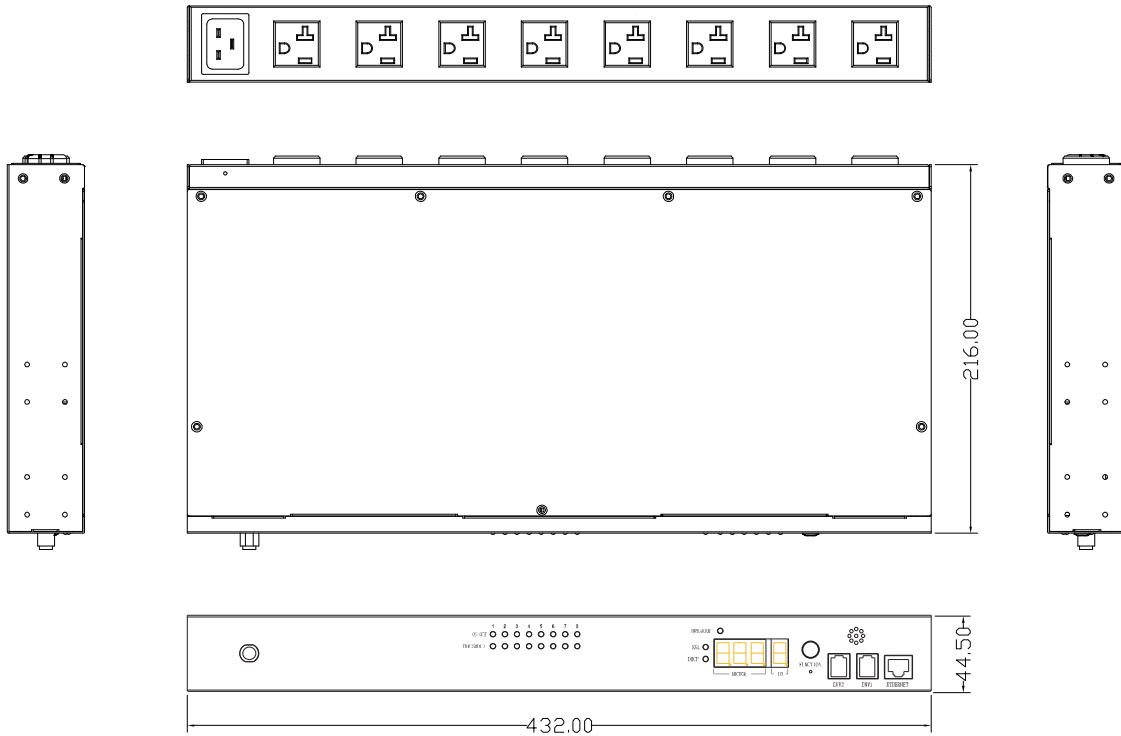
Package

No.	Description
1	PDU 1 set
2	Rack mount accessories 1 set
3	Software CD (manual, MIB)
4	IEC 320 C19 to NEMA 5-15P power cord, 3m

Accessory

Model Number	Model Name
CPM-ENV-2	Temp./Humidity probe (ENV)

Line Drawing



Model Number:

WHD-2011B-08N8

Front view



Back view



Plug



Specification

Output		Input	
Voltage	100-127 VAC	Voltage	100-127 VAC
Max. Current	20 A	Frequency	50/60Hz, full range
Outlet	(8) NEMA 5-15/20R	Max. Capacity	2540 VA
ON/OFF Ind.	(8) Green LED	Connection	IEC320 C20
Threshold Ind.	(8) Red LED	Status Ind.	(1) Red LED
Info. Display	4 digits of 7 Segments	Overload PROT	(1) Circuit breaker (UL1077)
Measurement		Other	
Current	+/- 1%+/-0.1A @0.2A ~ 32 A	ENET Connection	(1) RJ45
Voltage	+/- 1% +/- 1V @80V~250V	ENV Connection	(2) RJ11
Active Power	+/- 1% +/- 5W @50W~8000W	Function Selection	(1) Button
Apparent Power	+/- 1% @50VA~8000VA	DHCP Ind.	(1) Green LED
Frequency	+/- 1% @50~65Hz	SSL Ind.	(1) Green LED
Power Factor	+/- 1% @0.1~1.0		
kWh	.001kWh~99999.999kWh, (+/- 1% @50W~8000W) kh=1.0		
Dimension/Weight		Operation	
Net Size	432 x 216 x 44.5 mm	Operation Temp.	0 ~ 55°C
Net Weight	3.5 kg	Operation Humid.	0% ~ 90% RH
Package Size	490 x 330 x 155 mm	Storage Temp.	-20°C ~ 65°C
Package Weight	4.1 kg	Storage Humid.	0% ~ 90% RH
Approval			
Certification	CE, FCC		
Warranty	2 years		

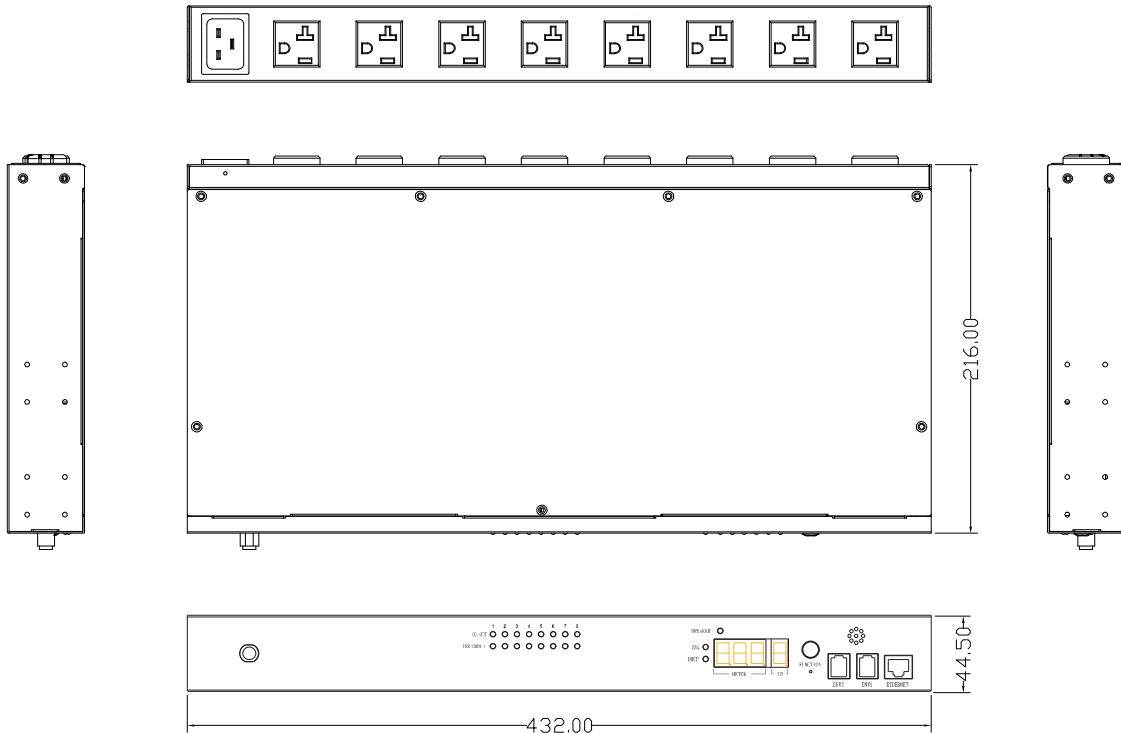
Package

No.	Description
1	PDU 1 set
2	Rack mount accessories 1 set
3	Software CD (manual, MIB)
4	IEC 320 C19 to NEMA 5-20P power cord, 3m

Accessory

Model Number	Model Name
CPM-ENV-2	Temp./Humidity probe (ENV)

Line Drawing



Model Number:

WHC-2011B-16NB

Plug



Specification

Output		Input	
Voltage	100-127 VAC	Voltage	100-127 VAC
Max. Current	20 A	Frequency	50/60Hz, full range
Outlet	(16) NEMA 5-15/20R	Max. Capacity	2540 VA
ON/OFF Ind.	(16) Green LED	Connection	NEMA5-20P, 3m
Threshold Ind.	(16) Red LED	Status Ind.	(1) Red LED
Info. Display	4 digits of 7 Segments	Overload PROT	(1) Circuit breaker (UL1077)
Measurement		Other	
Current	+/- 1%+/-0.1A @0.2A ~ 32 A	ENET Connection	(1) RJ45
Voltage	+/- 1% +/- 1V @80V~250V	ENV Connection	(2) RJ11
Active Power	+/- 1% +/- 5W @50W~8000W	Function Selection	(1) Button
Apparent Power	+/- 1% @50VA~8000VA	DHCP Ind.	(1) Green LED
Frequency	+/- 1% @50~65Hz	SSL Ind.	(1) Green LED
Power Factor	+/- 1% @0.1~1.0		
kWh	.001kWh~99999.999kWh, (+/- 1% @50W~8000W) kh=1.0		
Dimension/Weight		Operation	
Net Size	1245 x 56 x 80 mm	Operation Temp.	0 ~ 55°C
Net Weight	4.8 kg	Operation Humid.	0% ~ 90% RH
Package Size	1360 x 220 x 110 mm	Storage Temp.	-20°C ~ 65°C
Package Weight	5.8 kg	Storage Humid.	0% ~ 90% RH
Approval			
Certification	CE, FCC		
Warranty	2 years		

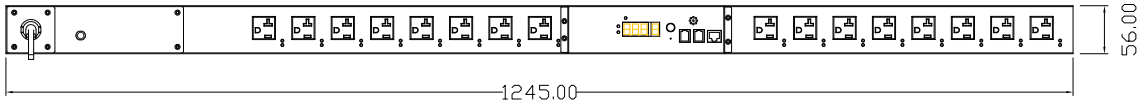
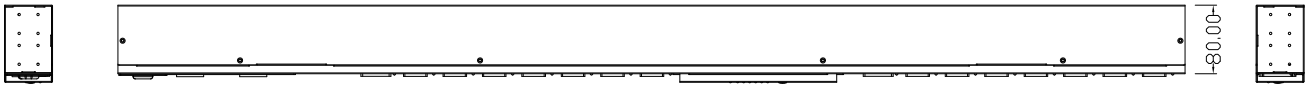
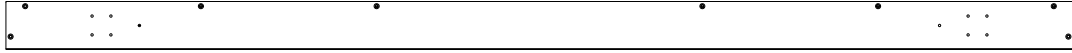
Package

No.	Description
1	PDU 1 set
2	Rack mount accessories 1 set
3	Software CD (manual, MIB)

Accessory

Model Number	Model Name
CPM-ENV-2	Temp./Humidity probe (ENV)

Line Drawing



Model Number:

WHD-3011M-08N8

Plug



Specification

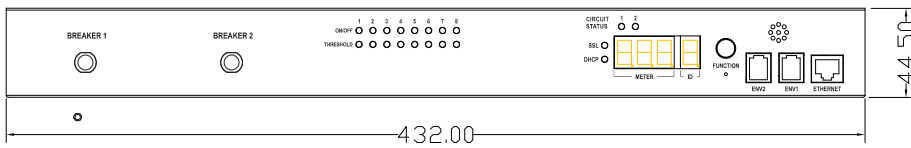
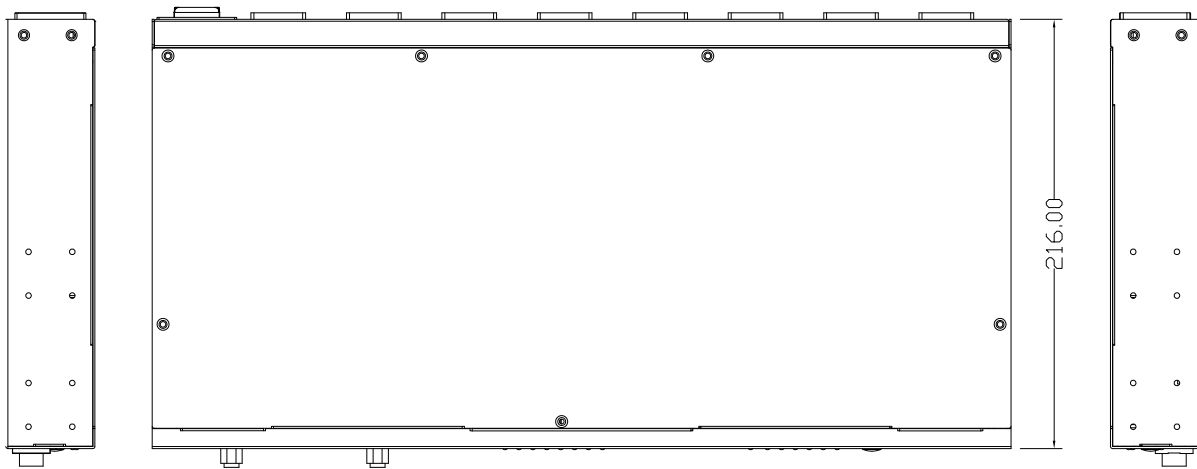
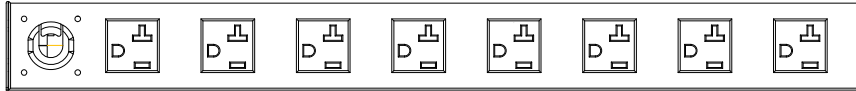
Output		Input	
Voltage	100-127 VAC	Voltage	100-127 VAC
Max. Current	30 A	Frequency	50/60Hz, full range
Outlet	(8) NEMA 5-15/20R	Max. Capacity	3810 VA
ON/OFF Ind.	(8) Green LED	Connection	NEMA L5-30P, 3m
Threshold Ind.	(8) Red LED	Status Ind.	(2) Red LED
Info. Display	4 digits of 7 Segments	Overload PROT	(2) Circuit breaker (UL1077)
Measurement		Other	
Current	+/- 1%+/-0.1A @0.2A ~ 32 A	ENET Connection	(1) RJ45
Voltage	+/- 1% +/- 1V @80V~250V	ENV Connection	(2) RJ11
Active Power	+/- 1% +/- 5W @50W~8000W	Function Selection	(1) Button
Apparent Power	+/- 1% @50VA~8000VA	DHCP Ind.	(1) Green LED
Frequency	+/- 1% @50~65Hz	SSL Ind.	(1) Green LED
Power Factor	+/- 1% @0.1~1.0		
kWh	.001kWh~99999.999kWh, (+/- 1% @50W~8000W) kh=1.0		
Dimension/Weight		Operation	
Net Size	432 x 216 x 44.5 mm	Operation Temp.	0 ~ 55°C
Net Weight	5.2 kg	Operation Humid.	0% ~ 90% RH
Package Size	490 x 390 x 155 mm	Storage Temp.	-20°C ~ 65°C
Package Weight	5.8 kg	Storage Humid.	0% ~ 90% RH
Approval			
Certification	CE, FCC		
Warranty	2 years		

Package

Accessory

No.	Description	Model Number	Model Name
1	PDU 1 set	CPM-ENV-2	Temp./Humidity probe (ENV)
2	Rack mount accessories 1 set		
3	Software CD (manual, MIB)		

Line Drawing



Model Number:

WHC-3011M-16NB



Plug

Specification

Output		Input	
Voltage	100-127 VAC	Voltage	100-127 VAC
Max. Current	30 A	Frequency	50/60Hz, full range
Outlet	(16) NEMA 5-15/20R	Max. Capacity	3810 VA
ON/OFF Ind.	(16) Green LED	Connection	NEMA L5-30P, 3m
Threshold Ind.	(16) Red LED	Status Ind.	(2) Red LED
Info. Display	4 digits of 7 Segments	Overload PROT	(2) Circuit breaker (UL1077)
Measurement		Other	
Current	+/- 1%+/-0.1A @0.2A ~ 32 A	ENET Connection	(1) RJ45
Voltage	+/- 1% +/- 1V @80V~250V	ENV Connection	(2) RJ11
Active Power	+/- 1% +/- 5W @50W~8000W	Function Selection	(1) Button
Apparent Power	+/- 1% @50VA~8000VA	DHCP Ind.	(1) Green LED
Frequency	+/- 1% @50~65Hz	SSL Ind.	(1) Green LED
Power Factor	+/- 1% @0.1~1.0		
kWh	.001kWh~99999.999kWh, (+/- 1% @50W~8000W) kh=1.0		
Dimension/Weight		Operation	
Net Size	1778 x 56 x 80 mm	Operation Temp.	0 ~ 55°C
Net Weight	8.2 kg	Operation Humid.	0% ~ 90% RH
Package Size	1890 x 220 x 110 mm	Storage Temp.	-20°C ~ 65°C
Package Weight	9.4 kg	Storage Humid.	0% ~ 90% RH
Approval			
Certification	CE, FCC		
Warranty	2 years		

Package

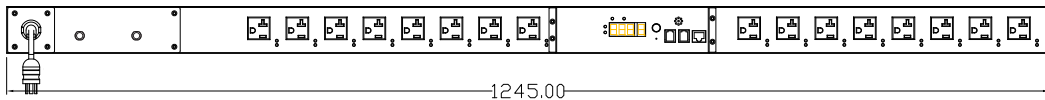
Accessory

No.	Description	Model Number	Model Name
1	PDU 1 set	CPM-ENV-2	Temp./Humidity probe (ENV)
2	Rack mount accessories 1 set		
3	Software CD (manual, MIB)		

Line Drawing



80.00



1245.00

56.00

Model Number:

WHC-3011M-24ND



Plug

Specification

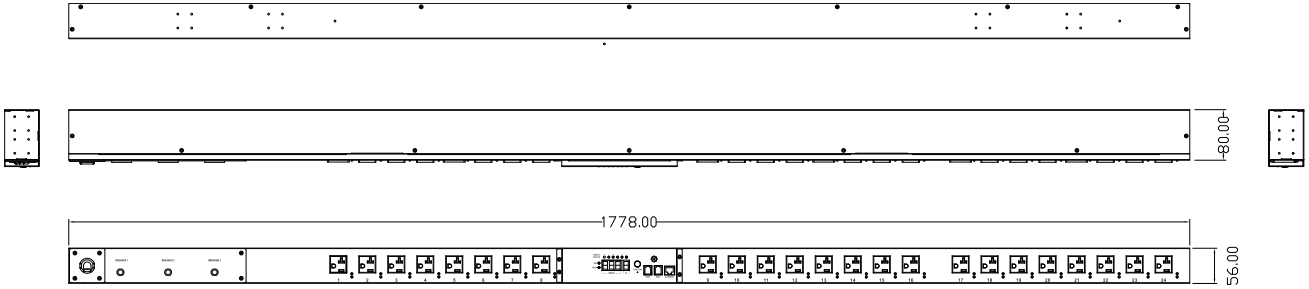
Output		Input	
Voltage	100-127 VAC	Voltage	100-127 VAC
Max. Current	30 A	Frequency	50/60Hz, full range
Outlet	(24) NEMA 5-15/20R	Max. Capacity	3810 VA
ON/OFF Ind.	(24) Green LED	Connection	NEMA L5-30P, 3m
Threshold Ind.	(24) Red LED	Status Ind.	(3) Red LED
Info. Display	4 digits of 7 Segments	Overload PROT	(3) Circuit breaker (UL1077)
Measurement		Other	
Current	+/- 1%+/-0.1A @0.2A ~ 32 A	ENET Connection	(1) RJ45
Voltage	+/- 1% +/- 1V @80V~250V	ENV Connection	(2) RJ11
Active Power	+/- 1% +/- 5W @50W~8000W	Function Selection	(1) Button
Apparent Power	+/- 1% @50VA~8000VA	DHCP Ind.	(1) Green LED
Frequency	+/- 1% @50~65Hz	SSL Ind.	(1) Green LED
Power Factor	+/- 1% @0.1~1.0		
kWh	.001kWh~99999.999kWh, (+/- 1% @50W~8000W) kh=1.0		
Dimension/Weight		Operation	
Net Size	1778 x 56 x 80 mm	Operation Temp.	0 ~ 55°C
Net Weight	8.2 kg	Operation Humid.	0% ~ 90% RH
Package Size	1890 x 220 x 110 mm	Storage Temp.	-20°C ~ 65°C
Package Weight	9.4 kg	Storage Humid.	0% ~ 90% RH
Approval			
Certification	CE, FCC		
Warranty	2 years		

Package

Accessory

No.	Description	Model Number	Model Name
1	PDU 1 set	CPM-ENV-2	Temp./Humidity probe (ENV)
2	Rack mount accessories 1 set		
3	Software CD (manual, MIB)		

Line Drawing



Model Number:

WHD-3020P-08N8

Front view



Back view



Plug



Specification

Output		Input	
Voltage	200-240 VAC	Voltage	200-240 VAC
Max. Current	30 A	Frequency	50/60Hz, full range
Outlet	(8) IEC320 C13	Max. Capacity	7200 VA
ON/OFF Ind.	(8) Green LED	Connection	NEMA L6-30P, 3m
Threshold Ind.	(8) Red LED	Status Ind.	(2) Red LED
Info. Display	4 digits of 7 Segments	Overload PROT	(2) Circuit breaker (UL1077)
Measurement		Other	
Current	+/- 1%+/-0.1A @0.2A ~ 32 A	ENET Connection	(1) RJ45
Voltage	+/- 1% +/- 1V @80V~250V	ENV Connection	(2) RJ11
Active Power	+/- 1% +/- 5W @50W~8000W	Function Selection	(1) Button
Apparent Power	+/- 1% @50VA~8000VA	DHCP Ind.	(1) Green LED
Frequency	+/- 1% @50~65Hz	SSL Ind.	(1) Green LED
Power Factor	+/- 1% @0.1~1.0		
kWh	.001kWh~99999.999kWh, (+/- 1% @50W~8000W) kh=1.0		
Dimension/Weight		Operation	
Net Size	432 x 216 x 44.5 mm	Operation Temp.	0 ~ 55°C
Net Weight	5.2 kg	Operation Humid.	0% ~ 90% RH
Package Size	490 x 390 x 155 mm	Storage Temp.	-20°C ~ 65°C
Package Weight	5.8 kg	Storage Humid.	0% ~ 90% RH
Approval			
Certification	CE, FCC		
Warranty	2 years		

Package

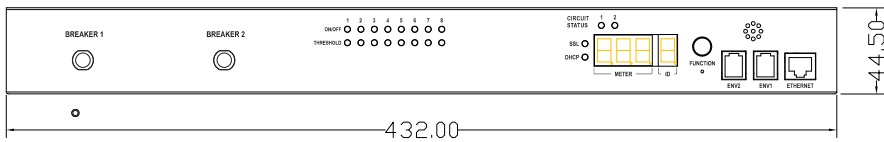
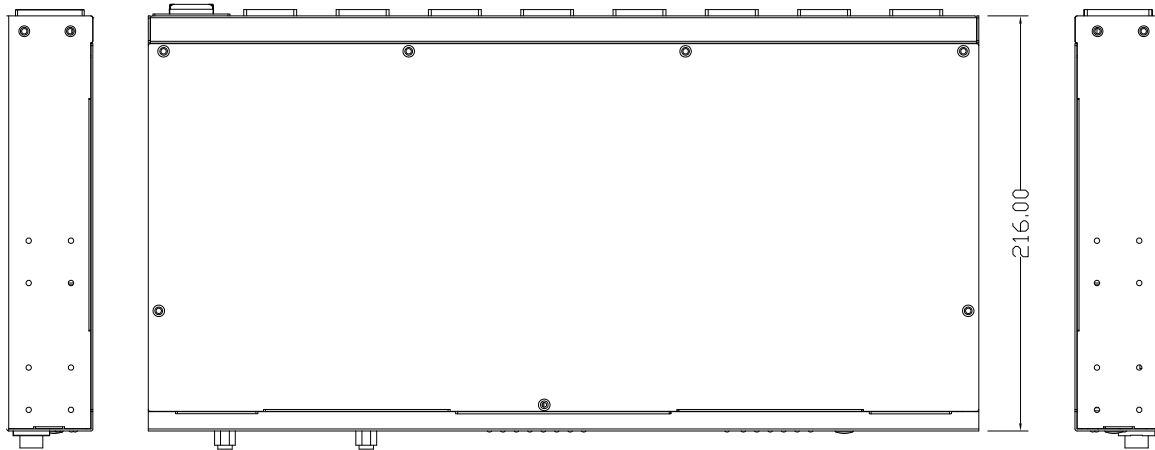
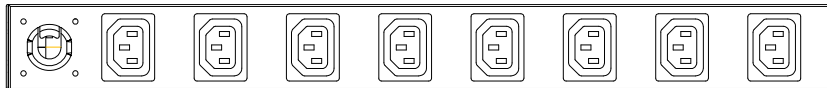
No.	Description
1	PDU 1 set
2	Rack mount accessories 1 set
3	Software CD (manual, MIB)

Accessory

Model Number	Model Name
CPM-ENV-2	Temp./Humidity probe (ENV)
STR-C14-B	C13 socket protection



Line Drawing



Model Number:

WHC-3020P-16NB

Plug



Specification

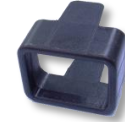
Output		Input	
Voltage	200-240 VAC	Voltage	200-240 VAC
Max. Current	30 A	Frequency	50/60Hz, full range
Outlet	(14) IEC320 C13 (2) IEC320 C19	Max. Capacity	7200 VA
ON/OFF Ind.	(16) Green LED	Connection	NEMA L6-30P, 3m
Threshold Ind.	(16) Red LED	Status Ind.	(2) Red LED
Info. Display	4 digits of 7 Segments	Overload PROT	(2) Circuit breaker (UL1077)
Measurement		Other	
Current	+/- 1%+/-0.1A @0.2A ~ 32 A	ENET Connection	(1) RJ45
Voltage	+/- 1% +/- 1V @80V~250V	ENV Connection	(2) RJ11
Active Power	+/- 1% +/- 5W @50W~8000W	Function Selection	(1) Button
Apparent Power	+/- 1% @50VA~8000VA	DHCP Ind.	(1) Green LED
Frequency	+/- 1% @50~65Hz	SSL Ind.	(1) Green LED
Power Factor	+/- 1% @0.1~1.0		
kWh	.001kWh~99999.999kWh, (+/- 1% @50W~8000W) kh=1.0		
Dimension/Weight		Operation	
Net Size	1778 x 56 x 80 mm	Operation Temp.	0 ~ 55°C
Net Weight	8.2 kg	Operation Humid.	0% ~ 90% RH
Package Size	1890 x 220 x 110 mm	Storage Temp.	-20°C ~ 65°C
Package Weight	9.4 kg	Storage Humid.	0% ~ 90% RH
Approval			
Certification	CE, FCC		
Warranty	2 years		

Package

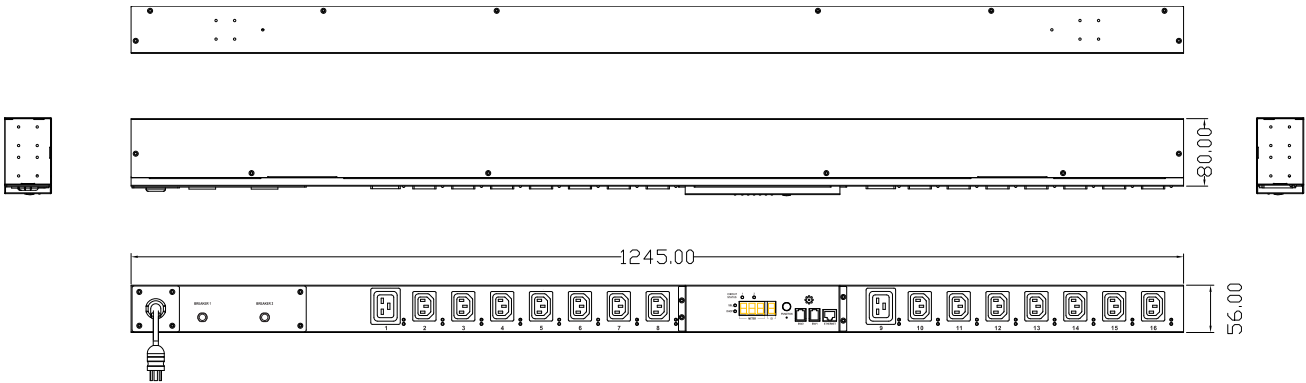
No.	Description
1	PDU 1 set
2	Rack mount accessories 1 set
3	Software CD (manual, MIB)

Accessory

Model Number	Model Name
CPM-ENV-2	Temp./Humidity probe (ENV)
STR-C14-B	C13 socket protection
STR-C20-B	C19 socket protection



Line Drawing



Model Number:

WHC-3020P-24ND

Plug



Specification

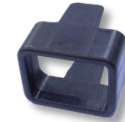
Output		Input	
Voltage	200-240 VAC	Voltage	200-240 VAC
Max. Current	30 A	Frequency	50/60Hz, full range
Outlet	(21) IEC320 C13 (3) IEC320 C19	Max. Capacity	7200 VA
ON/OFF Ind.	(24) Green LED	Connection	NEMA L6-30P, 3m
Threshold Ind.	(24) Red LED	Status Ind.	(3) Red LED
Info. Display	4 digits of 7 Segments	Overload PROT	(3) Circuit breaker (UL1077)
Measurement		Other	
Current	+/- 1% +/-0.1A @0.2A ~ 32 A	ENET Connection	(1) RJ45
Voltage	+/- 1% +/- 1V @80V~250V	ENV Connection	(2) RJ11
Active Power	+/- 1% +/- 5W @50W~8000W	Function Selection	(1) Button
Apparent Power	+/- 1% @50VA~8000VA	DHCP Ind.	(1) Green LED
Frequency	+/- 1% @50~65Hz	SSL Ind.	(1) Green LED
Power Factor	+/- 1% @0.1~1.0		
kWh	.001kWh~99999.999kWh, (+/- 1% @50W~8000W) kh=1.0		
Dimension/Weight		Operation	
Net Size	1778 x 56 x 80 mm	Operation Temp.	0 ~ 55°C
Net Weight	8.2 kg	Operation Humid.	0% ~ 90% RH
Package Size	1890 x 220 x 110 mm	Storage Temp.	-20°C ~ 65°C
Package Weight	9.4 kg	Storage Humid.	0% ~ 90% RH
Approval			
Certification	CE, FCC		
Warranty	2 years		

Package

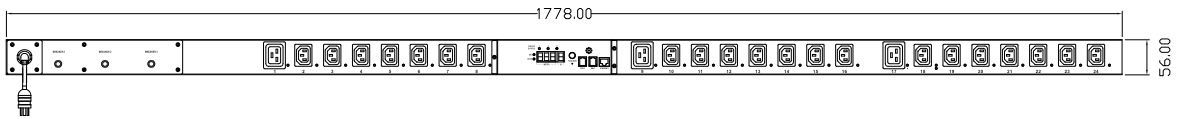
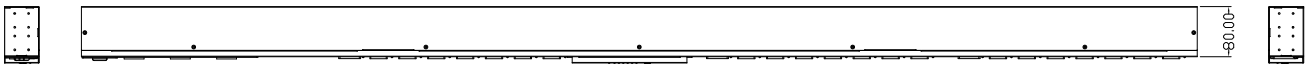
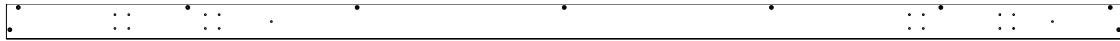
No.	Description
1	PDU 1 set
2	Rack mount accessories 1 set
3	Software CD (manual, MIB)

Accessory

Model Number	Model Name
CPM-ENV-2	Temp./Humidity probe (ENV)
STR-C14-B	C13 socket protection
STR-C20-B	C19 socket protection



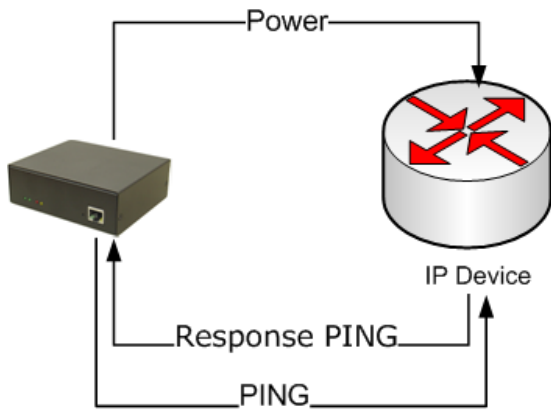
Line Drawing



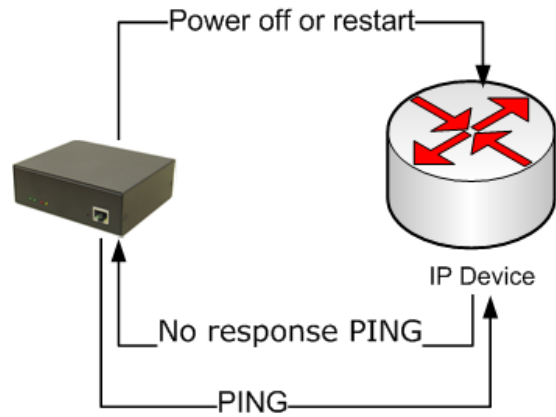
Annex. 1

Ping Function

The device responds PING normally



The device is not responding PING properly



Annex. 2

Temp./Humidity Probe



Specification

Hardware			
Connection	RJ11, cord 1.8m		
Temperature		Humidity	
Range	-30°C~70°C	Range	0~100%
Resolution	0.1°C	Resolution	0.1%
Precision	±1°C	Precision@ 5°C~60°C, 20%~80%	± 3%
		Precision@ other condition	±5%
		Sampling rate	1 second
Operation		Dimension/Weight	
Operation Temp.	0°C~50.0°C	Size	127 x 22 x 20 mm
Storage Temp.	-20.0°C~60.0°C	Weight	62 g
		Package Size	185 x 110 x 56 mm
		Package Weight	110 g